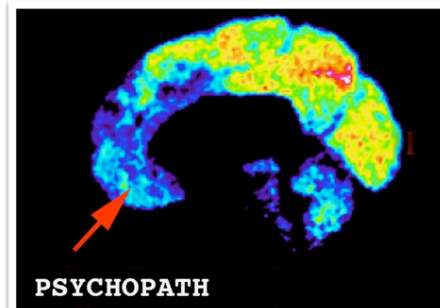
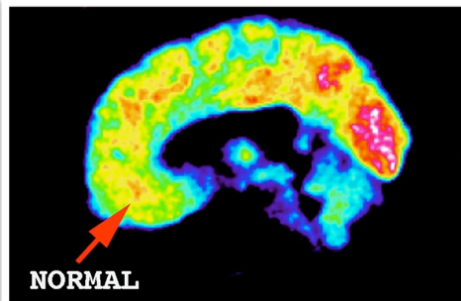


## New Study Says 1 Out of Every 5 Corporate Bosses Is a Psychopath

“ Psychopathy is a personality disorder that has been variously described as **characterized by shallow emotions (in particular reduced fear), stress tolerance, lacking empathy, coldheartedness, lacking guilt, egocentricity, superficial character, manipulativenness, irresponsibility, impulsivity and antisocial behaviors such as parasitic lifestyle and criminality.**



## Which Professions Have the Most Psychopaths? The Fewest?

### + PSYCHOPATHY

1. CEO
2. Lawyer
3. Media (TV/Radio)
4. Salesperson
5. Surgeon
6. Journalist
7. Police Officer
8. Clergyperson
9. Chef
10. Civil Servant

### - PSYCHOPATHY

1. Care Aide
2. Nurse
3. Therapist
4. Craftsperson
5. Beautician/Stylist
6. Charity Worker
7. Teacher
8. Creative Artist
9. Doctor
10. Accountant

The study of 261 senior professionals in the United States found that 21 per cent had clinically significant levels of psychopathic traits. The rate of psychopathy in the general population is about one in a hundred.