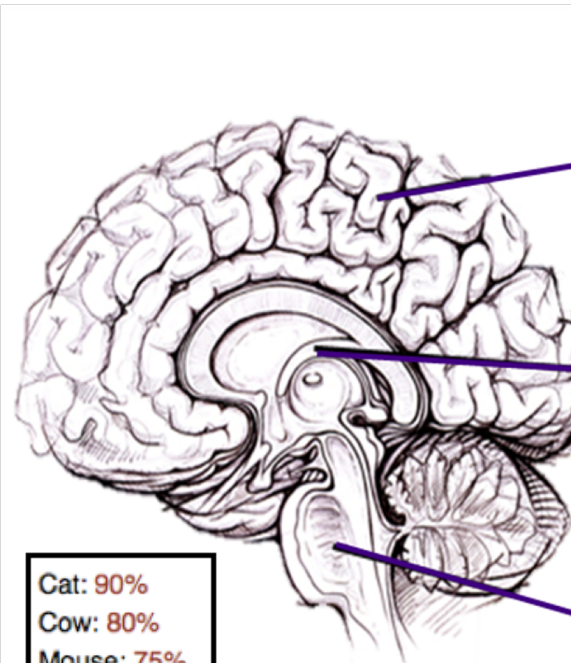
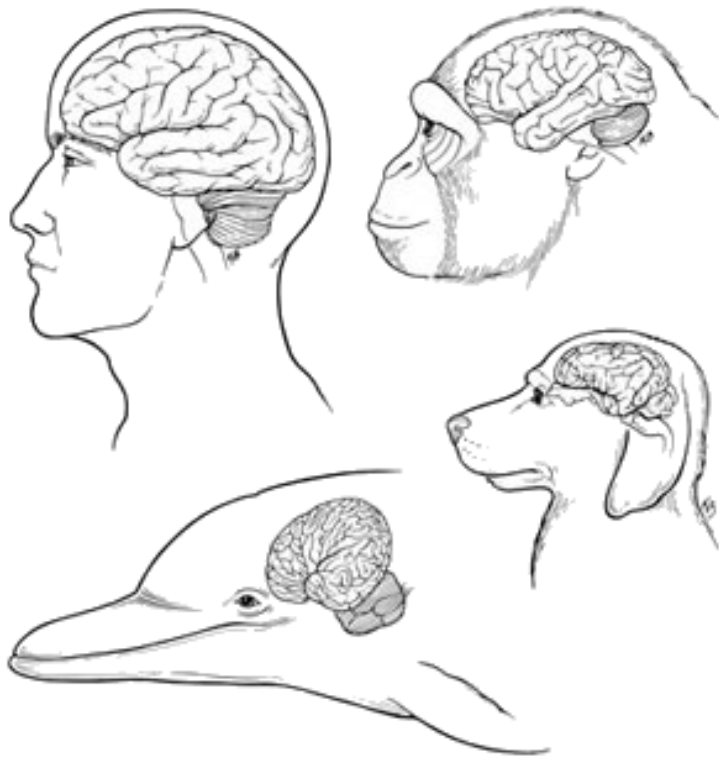


# ALL Animals Are Sovereign & Sentient Beings



Cat: 90%  
Cow: 80%  
Mouse: 75%  
Fruit Fly: 60%  
Banana: 50%

## PRIMATE "THINKING" BRAIN:

- *Brain region:* Neo cortex
- *Responsible for:* sensory perception, spatial reasoning, generation of motor commands, conscious thought, intellectual memory
- *Happy when:* learning, anticipating future reward, connected to higher purpose, in flow
- *Evolutionary role:* predicting brain that helps the community thrive

## MAMMILIAN "FEELING" BRAIN:

- *Brain region:* Limbic system (includes amygdala / fear center & nucleus accumbens / pleasure center.)
- *Responsible for:* (positive) emotions, learning, emotional memory and spirituality
- *Happy when:* feel trust, social bonds, higher status
- *Evolutionary role:* social brain that helps the community survive

## REPTILIAN "INSTINCTIVE" BRAIN:

- *Brain region:* brain stem
- *Responsible for:* the 4 F's - fight, flight, feed and fornicate (wired for danger and therefore negative emotions)
- *Happy when:* safe from danger
- *Evolutionary role:* selfish brain that helps us survive individually

After 2,500 Studies, It's Time to Declare Animal Sentience Proven

When Children Question Why They Are Eating Animals

Helping children understand carnism